

Specifications

Picture	Dimension	Parameters	
		Input voltage	DC 24V
		Lamp power	1.68W
		Chip	UCS1903
		LED chip	5050 RGB
		LEDs number	7
		Color	RGB programmable
		IP rating	IP65
		Beam angle	≥140°
		Lifespan	≥50000h

Features

Product Number	RL-50mm-ICRGB
Light Source	SMD 5050 RGB LED Chip
Waterproof	IP 65
LED Quantity	7 LEDS/pcs
Operating Voltage	DC24V
Power	1.68 Watts/pcs
IC Type	UCS1903
Diameter	50mm
Operation Temperature	- 30°C-- 50°C

Advantages

- 1- This is RGB addressable LED lamp.
- 2- Each point included 7 pcs of high quality 5050 RGB led,
- 3- The Micro driver also has 3 channel, standard SPI signal
- 4- Each pixel lamp has a pair of waterproof connectors it makes the installation easy.
- 5- 50mm diameter LED Pixel ball housing by a clear lens cover, fiber PCB:

Applications



1. Amusement Park Rides Light

Ferris wheel, Carousels, Pirate ship, Pendulum, Bumper car, Tower and so on.

2. Advertisement Outdoor Signboard Backlight

Logo, Signage, Channel letter, Signs, Exposed luminous characters, Billboard and so on.

3. Stage Decoration Light

KTV, Disco, Bar, Night club and other stage light.

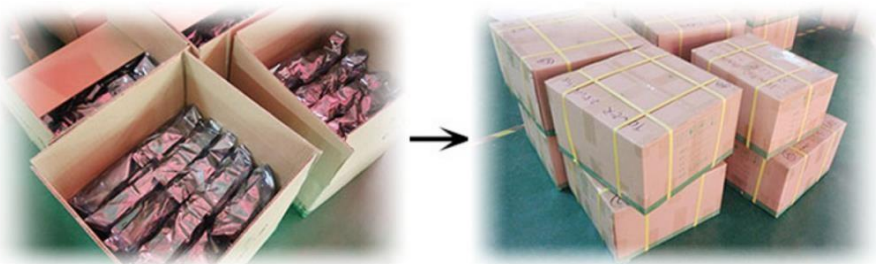
4. Commercial Light

Hotel, shopping mall, Theater, Square and so on.

5. Kids Rides Decoration

Castles, Robot, Mini carousels, Car, Mini train etc.

Packing & Weight



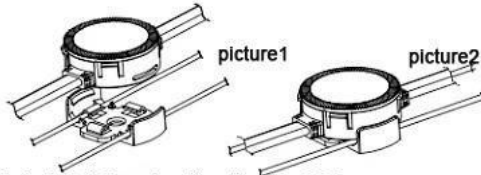
Weight/100pcs	Pieces/bag	Pieces/carton	G.W/carton	Carton size
2.0kg	100pcs	1000pcs	20kg	48cm*48cm*28cm

Installing:

- 1- 50mm led pixel light source can be installed by 2.0 diameter steel wire with snap.
- 2- Can use aluminium profiles, 50mm diameter hole, then fixed into the position of profiles.
- 3- Can be fixed with screws and snap, Then fixed into the wall
- 4- Directly fixed by glue on the bottom of 50mm led pixel lights

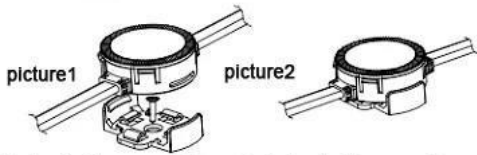
Installation method

Installation method -1



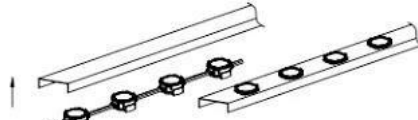
Installed wire installation, wire with a diameter of 2.0 rope through the wire bottom cover (picture 1), then the lamp and the bottom of the wire can be tightened (picture 2)

Installation method-3



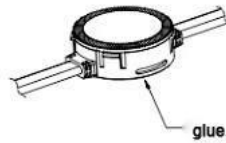
Can be fixed with screws, in the center hole out of the expansion screw fixed to the wall or the need to install the location (picture1), then the lamps and screws can be tightened as shown in picture 2

Installation method-2



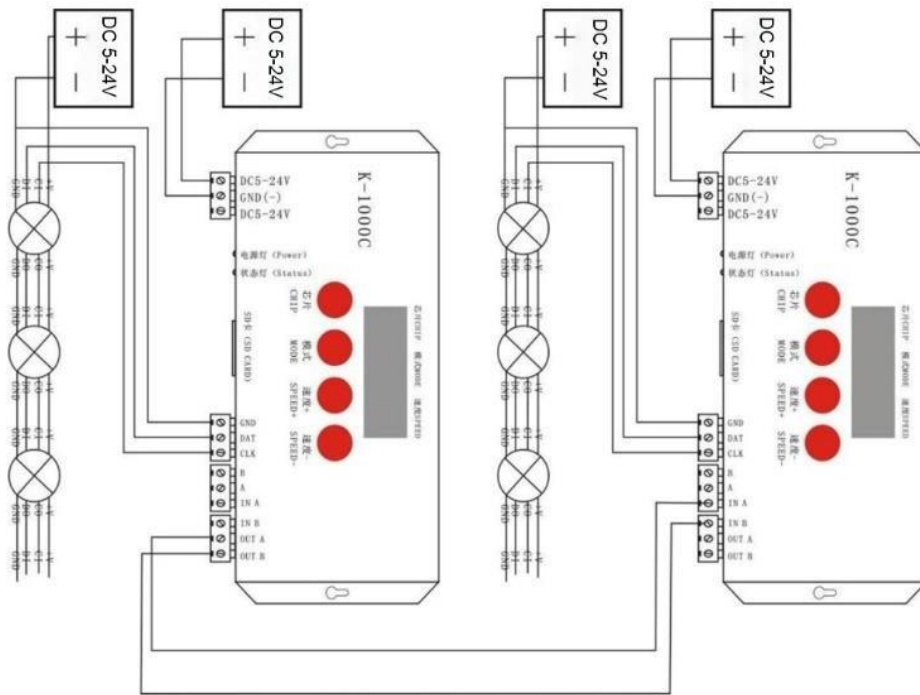
(With hole diameter 40MM), the first lamp into the profile hole, and then fixed in the installation position of the profile, can be loaded into the profile thickness: 0.8-3mm

Installation method-4



Directly in the bottom of the lamp with glass glue, stick to the wall can be, as shown

Connection



Notes:

1. Male connector (with pins) is signal input port, female connector (without pins) is signal output port.
2. We suggest that every 20pcs lights connect to the power supply in parallel to avoid voltage decline.
3. One controller can only support up to 2000 pixels, more than 2000 pixels, you need to cascade with multiple controllers.